



Native Plants

These plants originated in this region and require very little care once established. They have deeper roots than turf grasses allowing stormwater to infiltrate into the soil and they provide habitat for local wildlife while adding beauty to the landscape.



For more information on types of native plants and additional resources, visit the PA DCNR website.



[https://](https://www.dcnr.pa.gov/Conservation/WildPlants/LandscapingwithNative-Plants/Pages/default.aspx)

[www.dcnr.pa.gov/](https://www.dcnr.pa.gov/Conservation/WildPlants/LandscapingwithNative-Plants/Pages/default.aspx)

[Conservation/](https://www.dcnr.pa.gov/Conservation/WildPlants/LandscapingwithNative-Plants/Pages/default.aspx)

[WildPlants/](https://www.dcnr.pa.gov/Conservation/WildPlants/LandscapingwithNative-Plants/Pages/default.aspx)

[LandscapingwithNative-](https://www.dcnr.pa.gov/Conservation/WildPlants/LandscapingwithNative-Plants/Pages/default.aspx)

[Plants/Pages/](https://www.dcnr.pa.gov/Conservation/WildPlants/LandscapingwithNative-Plants/Pages/default.aspx)

[default.aspx](https://www.dcnr.pa.gov/Conservation/WildPlants/LandscapingwithNative-Plants/Pages/default.aspx)



Working Towards Healthier Water

Every resident of the watershed deserves drinkable, swimmable, fishable water in their neighborhood streams.

Together we can make it happen!



For more information:

www.edcsc.org



More info available at partner organizations:



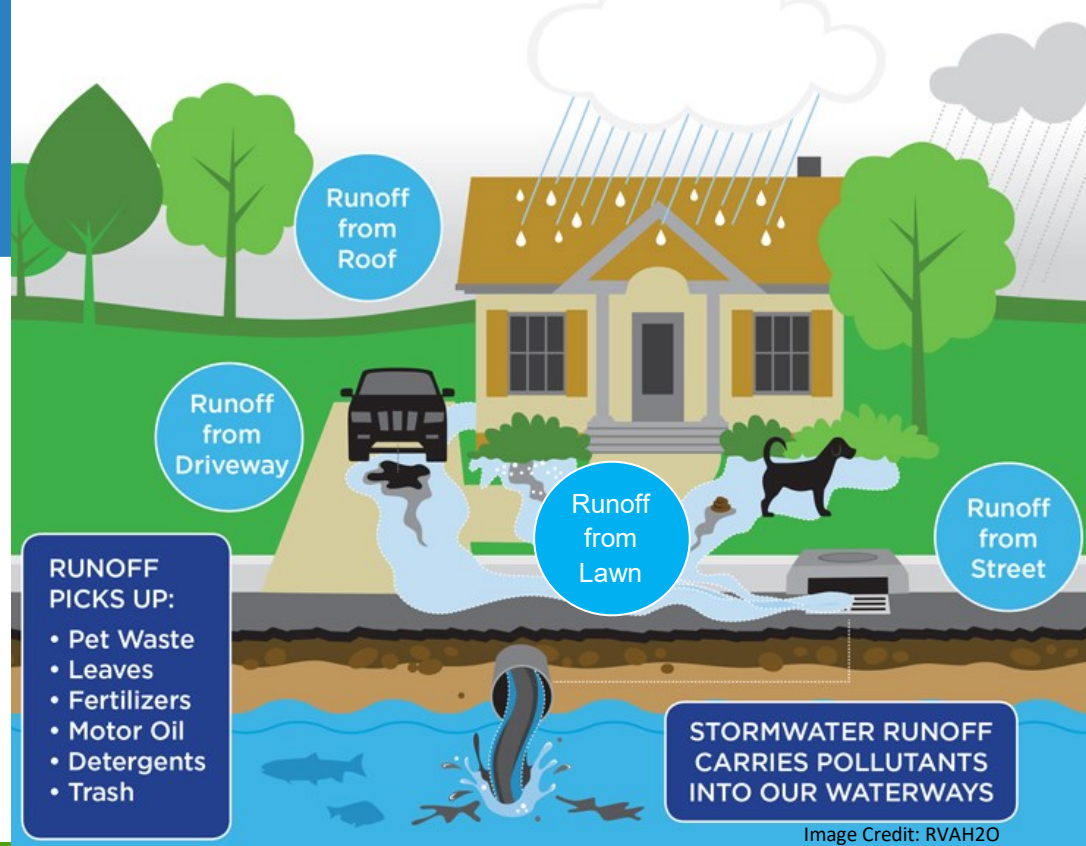
Naturalizing your Yard

Nature friendly landscaping for water quality



How yard practices impact nature and water quality

Landscapes dominated by turf grasses offer little wildlife benefit, absorb very little stormwater, and require intense maintenance. Most suburban landscapes allow stormwater to runoff hard surfaces including lawns, increasing the runoff to our waterways via the stormsewer system that leads to pollution and flooding.



Creek Friendly Lawn Care

- Reduce lawn areas by planting native plants.
- Mow your grass higher to create a healthier root system.
- Test your soils before adding fertilizers and only use the minimum required.
- Water infrequently but deeply.
- Aerate periodically to undo soil compaction.
- Reduce herbicide use, a lawn can be more than turf grasses.
- Leave your grass clippings as a natural fertilizer.

Steps to creating a more naturalized and creek friendly yard



Rethink Landscaping and Landscaping Practices

Reduce fertilizer and pesticide use as well as increase the use of native plants in the place of lawn.



Plant Trees and Riparian Buffers

Trees absorb large amounts of rainfall. Buffers are vegetated areas along creeks that protect streambanks and help improve water quality.



Consider Pervious Paving

Think about installing pavers or pervious asphalt that will allow water to infiltrate into the ground.



Install Rain Barrels

Collect rainwater from your roof in a rain barrel for later use in your yard.



Install a downspout planter

Planter that connects to a downspout and reduces runoff by allowing plants to absorb stormwater.



Build a Rain Garden

A depressed garden that can collect and infiltrate runoff from your roof and paved surfaces.

Studies have shown that stormwater management improvements can increase property value.